

Hay & Grassland Equipment





“

NC Equipment prides itself on being a trusted provider of world class equipment to New Zealand farmers and contractors.

NC Equipment has been sourcing, supplying and servicing Farm Equipment since 1965. All our machinery has been sourced from reputable firms that share our passion for quality, creativity, experience and reliability.

We make it our job to understand our customers and to search for and challenge our suppliers to ensure we are constantly offering the latest industry leading products that meet the evolving needs of agriculture.

Hay & Grassland

Where there are cows and sheep there will always be a need for grass, hay, silage and balage. Our carefully selected brands are a popular choice for the contractors and serious farmers in the area, backed up by manufacturers and suppliers who share the same passion as us being; 'Technology that works' and 'giving our customers value for money.'

NC Equipment have built up a reputation for giving exceptional after sales support which is critical to the success of this category due to the seasonal, weather and financial pressures that the 'hay season' brings!

- Hay Balers
- Hay Tedders
- Hay Rakes
- Hay Mowers
- Mulching Mowers
- Topping Mowers
- Finishing Mowers
- Loader Wagons

Contents

Bale Packers	4
Hay Balers	7
Hay Tedders	13
Hay Rakes	18
Hay Mowers	25
Mulching Mowers	34
Topping Mowers	43
Finishing Mowers	52
Loader Wagons	54
Our Range and Service	56

7

13

24

41

52





Bale Packers

Bale Baron Tow-Behind Bale Packers	5
Bale Baron Self-Propelled Bale Packers	6



Bale Baron Tow-Behind Bale Packers

The BALE BARON® virtually eliminates all manual handling, extra time and additional labour costs - for growers – and gives equine and livestock owners the size and convenience they will pay extra for. With the choice of 3 power options, tow-behind Bale Barons can operate with any 100+ hp tractor.

Features:

- Designed with a bale boosting conveyor that grabs bales off the field and packs them up.
- Telescoping end gates kit which change from 21 Pack to 18 Pack or 9 Pack with the pull of a pin.
- Computer Control System. The Smart/Solve system runs using a PLC that constantly monitors and warns the operator when needed.
- Tightly packed bundles with a double knot system means you eliminate wasted space and maximize the load potential.
- Receiving platform available for pulling Bale Baron directly behind baler.

Specifications:

MODEL NUMBER	BALE CAPACITY	MIN HP REQUIREMENT	WEIGHT (KG)	WIDTH (M)
4240P	800/Hr	80	5,100	2.5
4245P	1000/Hr	100	5160	2.5



Bale Packers



Bale Baron Self-Propelled Bale Packers

The new Self-Propelled Bale Baron is the latest innovation in our line of small bale packaging systems. The Self-Propelled Bale Baron is powerful and versatile and designed to increase your bale production without the use of a tractor.

Features:

- Keep up with 3 balers! Top in-field pickup speed of 20 Kph.
- 14.1m turning radius reduces wasted time.
- Having the pickup directly out front eliminates head-turning and results in less operator fatigue.
- 6.8L engine - tier 3 John Deere 173 HP 6 cylinder turbo charged diesel engine.
- Complete with in-cab displays and air conditioning, this premium cab offers a full view of your surroundings and comes with comfortable ergonomic driver's seat and trainer seat.

Specifications:

MODEL NUMBER	BALE CAPACITY	ENGINE (L)	WEIGHT (KG)	WIDTH (M)	HYDRAULICS (L/M)
6240SP	1,100/Hr	6.8	9025	2.72	150

Bale Baron

Hay Balers

Krone Fortima Variable Chamber Baler	8
Krone Comprima Variable Chamber Baler	9
Krone Comprima Semi-Variable Chamber Baler	10
Krone Comprima Baler/Wrapper	11
Krone Big Pack Square Baler	12

Bale Type Guide



ROUND



SQUARE



Hay Balers



Krone Fortima Variable Chamber Baler

The Fortima is known for the powerful combination of proven engineering and innovative technology. The German quality round baler is the best variable chamber round baler in the world. Perfect for baling of hay, straw and balage and a wide range of other materials all under extreme weather conditions.

Features:

- Chain and slat baling system for baling hay, straw and balage and a wide range of other material.
- The variable chamber allows the operator to select bale diameter from the cab.
- Selectable knife cutting system allows operator to select 17, 15 or 7 knives for different crop lengths.
- Large full width feed-in rotor for no blockages.
- Krone cam-less pickup for higher productivity, cleaner gathering and low maintenance.

Specifications:

MODEL NUMBER	CHAMBER SIZE WxH (M)	PICKUP WIDTH (M)	TARE WEIGHT (KG)	HP REQUIREMENT
V 1500 MC	1 - 1.5 x 1.2	2.05	3500	50
V 1800 MC	1 - 1.8 x 1.2	2.05	3800	60





Krone Comprima Variable Chamber Baler

The Comprima is a German quality round baler featuring Krone's innovative NovaGrip belt and slat variable chamber baling system for quite high density operation.

Features:

- The variable chamber allows the operator to select bale diameter from the cab.
- Selectable knife cutting system allows operator to select from 0 - 26 knives for different crop lengths.
- Krone's cam-less pick up for cleaner gatherings, higher productivity and low maintenance.
- Large full width feed-in rotor for no blockages.

Specifications:

MODEL NUMBER	CHAMBER SIZE WxH (M)	PICKUP WIDTH (M)	TARE WEIGHT (KG)	HP REQUIREMENT
V 150 XC	1 - 1.5 x 1.2	2.15	3790	70
V 180 XC	1 - 1.8 x 1.2	2.15	4190	80



Hay Balers



Krone Comprima Semi-Variable Chamber Baler

German quality round baler featuring Krone's innovative NovaGrip belt and slat semi-variable chamber baling system for quite high density operation and straight forward design.

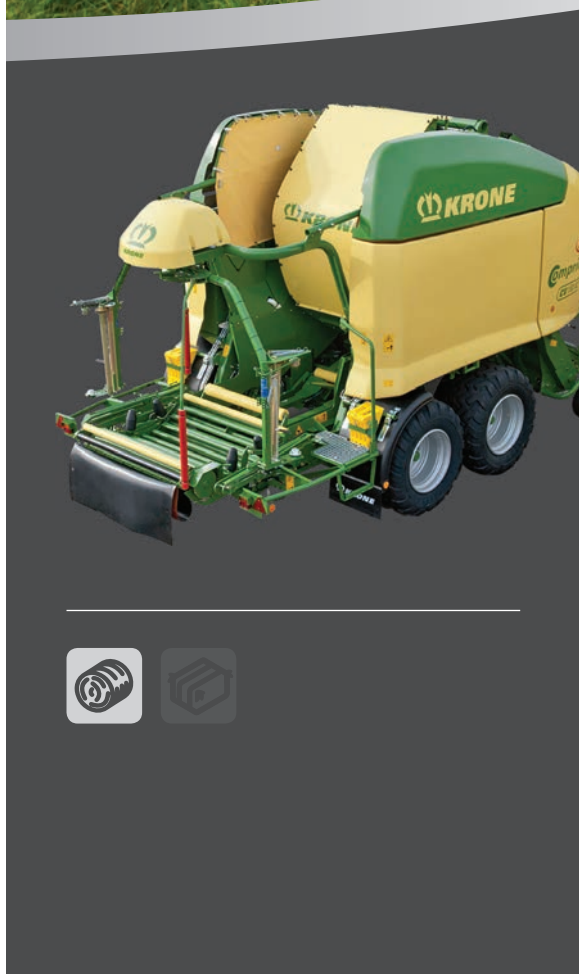
Features:

- Unique easy maintenance fixed chamber baler with variable properties.
- Selectable knife cutting system allows operator to select from 0 - 26 knives for different crop lengths.
- Krone's cam trackless pick-up for cleaner gathering and higher productivity.

Specifications:

MODEL NUMBER	CHAMBER SIZE WxH (M)	PICKUP WIDTH (M)	TARE WEIGHT (KG)	HP REQUIREMENT
F 155 XC	1.25 - 1.5 x 1.2	2.15	2990	70





Krone Comprima Baler/Wrapper

These baler wrapper combinations integrate two operations in one machine, eliminating the use of a second tractor and operator. Moreover, with Krone manufacturing both the baling and wrapping modules, all machine functions and cycles are automatically controlled and perfectly sequenced to provide an absolutely smooth operation.

Features:

- Cut labour and fuel costs by integrating two operations in one machine.
- Separate on-board hydraulic system to ensure constant supply of oil independently of the tractor system.
- Krone's NovaGrip elevator with rubber tread fabric belts and slats to deliver high bale densities and quiet running.
- Flexibility to bale hay and straw bales without film wrapping and dropping in pairs for efficient handling.

Specifications:

MODEL NUMBER	CHAMBER SIZE WxH (M)	PICKUP WIDTH (M)	TARE WEIGHT (KG)	HP REQUIREMENT
CF 155 XC	1.25 - 1.5 x 1.2	2.15	5500	100
CV 150 XC	1 - 1.5 x 1.2	2.15	6900	100



Hay Balers



Krone Big Pack Baler

With the Krone Big Pack large square balers you're investing in experience and expertise in baler design. Krone knows exactly what farmers need in the field and offers a complete range of balers with different chamber dimensions.

Features:

- Krone VFS (Variable Filling System) for complete filling of the bale chamber.
- Long conical bale channel for the best bale shape.
- Cam-less easy flow pick-up with powered feed roller.
- Krone Vari-Cut. The blades can be preselected without tools in six groups of 51, 26, 25, 12, 5 or 0. The preselected group is engaged hydraulically from the cab.

Specifications:

MODEL NUMBER	CHAMBER SIZE WxH (MM)	BALE LENGTH (M)	TARE WEIGHT (KG)	HP REQUIREMENT
870 HDP XC	800 x 700	1.0 - 2.7	9,400	163
890 XC	800 x 900	1.0 - 2.7	8,800	129
1270 XC	1200 x 700	1.0 - 2.7	9,400	136
1290 XC	1200 x 900	1.0 - 2.7	9,900	143
1290 HDP XC	1200 x 900	1.0 - 3.2	12,000	197
1290 HDP II XC	1200 x 900	1.0 - 3.2	15,400	258

Hay Tedders

Sitrex HM300 Tedder/Rake	14
Sitrex UNI400 Tedder/Rake	15
Krone Mounted Tedders	16
Krone Trailed Tedders	17



Hay Tedders



Sitrex HM300 Tedder/Rake

The most complete universal power rake for silage and hay crops. This power rake is fitted with wide tyres in order to improve ground clearance and obtain a better performance on rough terrain. When lifted the HM300 locks automatically on centre position and avoids lateral oscillation.

Features:

- Excellent job in spreading, tedding and windrowing.
- Very simple operation and sturdy construction.
- Pivoting coupling allows the machine to follow the tractor course thoroughly.

Specifications:

MODEL NUMBER	WORKING WIDTH (M)	TRANSPORT WIDTH (M)	NUMBER OF ROTORS	WEIGHT (KG)	MIN HP REQUIREMENT
HM300	3	2.3	2	330	35





Sitrex UNI400 Tedder/Rake

The UNI400 takes combination raking and spreading to improved levels over and above other combination machines. With a working width of up to 4 metres, this machine will handle the heaviest of green crops.

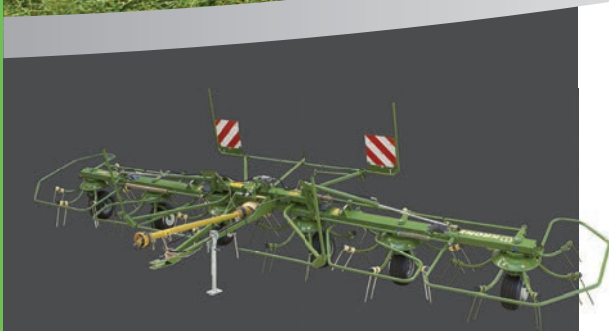
Features:

- Excellent job in spreading, tedding and windrowing.
- Very simple operation and sturdy construction.
- Long vertical tines allow the machine to rake cleanly and gently.
- Strong and heavy steel cam track.

Specifications:

MODEL NUMBER	WORKING WIDTH (M)	TRANSPORT WIDTH (M)	NUMBER OF ROTORS	WEIGHT (KG)	MIN HP REQUIREMENT
Uni-400	4	2.3	2	420	35

Hay Tedders



Krone Mounted Tedders

Krone's mounted tedders have powerful rotors turning crops into high-quality forage. Featuring strong frames, robust gearboxes and rotors, they perform equally well in hay and heavy crops, having proven themselves best in silage.

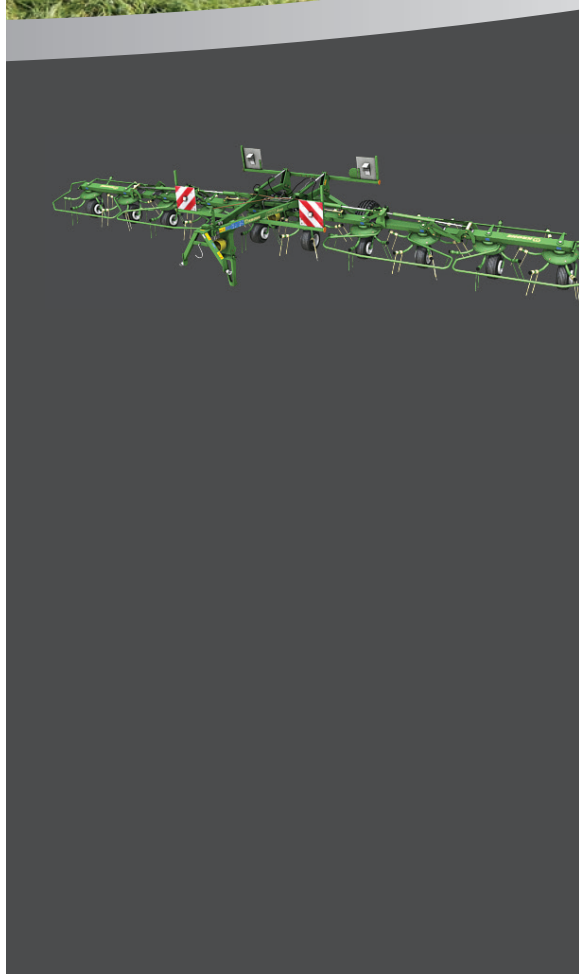
Features:

- Maintenance-free drive-line with 8-finger OctoLink clutch.
- Maintenance-free, enclosed, liquid-grease lubricated gearboxes.
- Hard-wearing Super-C tines.
- Central border spreading control spreads the crop away from the boundary for easier harvesting.

Specifications:

MODEL NUMBER	WORKING WIDTH (M)	TRANSPORT WIDTH (M)	NUMBER OF ROTORS	WEIGHT (KG)	MIN HP REQUIREMENT
KW4.62/4	4.6	2.7	4	570	35
KW5.52/4X7	5.5	2.98	4	680	50
KW6.02/6	6	2.69	6	750	50
KW6.72/6	6.7	2.85	6	860	60
KW7.82/6X7	7.8	2.98	6	980	65
KW7.92/8	7.9	2.98	8	1,090	65
KW8.82/8	8.8	2.98	8	1,180	75
KW10.02/10	10	2.98	10	1,350	80
KW11.22/10	11	2.98	10	1,550	90





Krone Trailed Tedders

Krone's trailed tedder range is powerful rotors turning crops into high-quality forage. These rotary tedders are packed with cutting-edge technology and offer an extremely rugged design and outstanding longevity. Ideal machines to operate behind low-horse power tractors with small lift capacities.

Features:

- Maintenance-free drive-line with 8-finger OctoLink clutch.
- Maintenance-free, enclosed, liquid-grease lubricated gearboxes.
- Hard-wearing Super-C tines.
- Central border spreading control spreads the crop away from the boundary for easier harvesting.

Specifications:

MODEL NUMBER	WORKING WIDTH (M)	TRANSPORT WIDTH (M)	NUMBER OF ROTORS	WEIGHT (KG)	MIN HP REQUIREMENT
KWT10.02/10	10	2.98	10	3,770	55
KWT11.22/10	10.95	2.98	11	1,510	55
KWT1300	13.1	2.98	15	2,750	70
KWT1600	15.27	2.98	15	3,490	80





Hay Rakes

Paddon Trailed V-Rakes	19
Krone Mounted Rotary Rakes	21
Krone Trailed Twin-Rotor Rakes	22
Krone Trailed Quad-Rotor Rakes	23



Paddon Trailed V-Rake

The Paddon MX10 VEE Rake is built to rake the heaviest of silage crops cleanly. It will also effortlessly rake the bulkiest of hay and straw crops. Standard telescopic arms allow for very easy set up and with extra-long reel arms, the reels follow the ground even in the roughest conditions. This also allows the reels to lift high enough to clear raked rows.

Features:

- Operate behind a tractor or ute.
- Reels are lifted and lowered hydraulically by either the tractors hydraulics or an optional fitted hand pump.
- Reel arm pivot and all the lifting shafts run in nylon bushes for a smooth and quiet operation.
- Large 15" wheels and 2000kg hubs and stubs are standard with very efficient front wheel pivot brakes to stop wheel shimmy when transported at high speeds.

Specifications:

MODEL NUMBER	WORKING WIDTH (M)	TRANSPORT WIDTH (M)	NUMBER OF REELS	WEIGHT (KG)	MIN HP REQUIREMENT
MX10	6.5	2.6	10	1050	30



Hay Rakes



Paddon CR Range Trailed V-Rake

The CR Range incorporates features like closer reel spacings, low centre of gravity, extensively strengthened frame, high reel lift, and options of 3 point or 2 point linkage steering. The result? A rake that has no equal in manoeuvrability and stability.

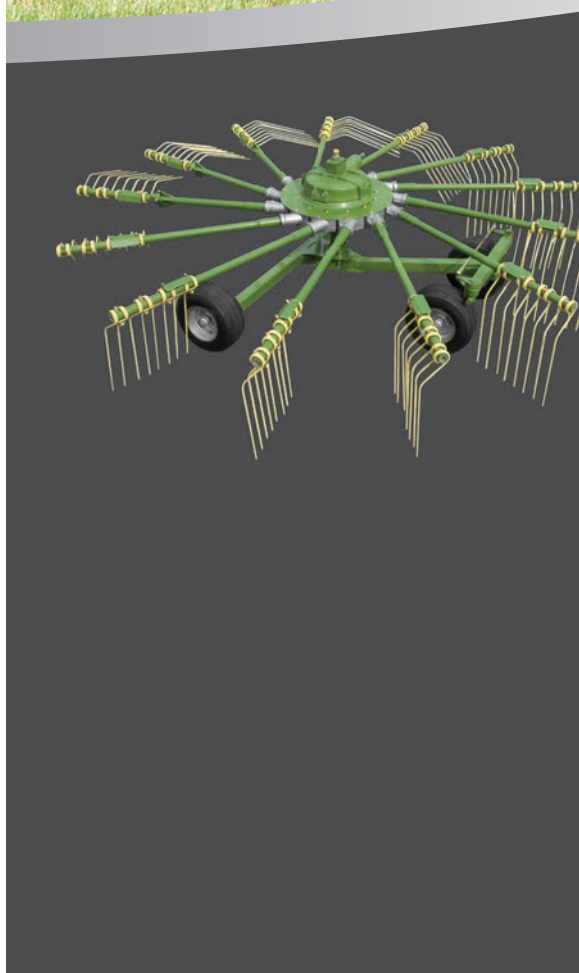
Features:

- NEW reel design includes 50% stiffer, heavier 8.2mm tines, enclosed by a 10x40mm nylon band, resulting in cleaner raking in heavy green crops, no wear, where tine protrudes through band, very quiet to operate and less tine breakages.
- All tine reel centres have fully sealed tapered roller bearing units to withstand side loading.
- Hydraulic reel lift.
- Optional steering and reel arm lifters.

Specifications:

MODEL NUMBER	WORKING WIDTH (M)	TRANSPORT WIDTH (M)	NUMBER OF REELS	WEIGHT (KG)	MIN HP REQUIREMENT
CR12	7	2.7	12	1355	40
CR14	7.8	2.7	14	1650	45
CR16	8.6	2.7	16	1900	50

Paddon



Krone Mounted Rotary Rake

The three-point hitch single-rotor Swadro models of 3.80 m to 4.20 m work widths. Many of their well-proven features were taken over from the high-output rakes. The larger the rotor diameter, the more important the running gear. It is down to the running gear whether the tines cover the full work width and work at a consistent height. These are essential parameters for clean forage, because undulations and ruts can lead to contaminated and thus poor-quality forage.

Features:

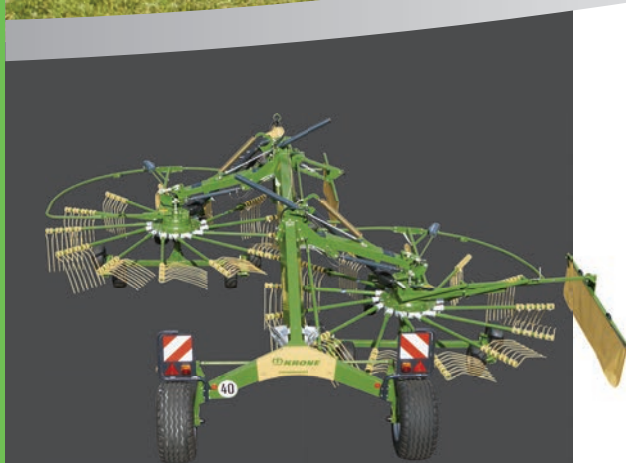
- Maintenance-free rotors and rotor gearboxes.
- Hard-wearing DuraMax cam tracks with three-year warranty.
- KRONE Lift Tines rake up faster, produce more accurate windrows and deliver cleaner forage.
- Jet Effect rotors protect the ground during headland turns for consistently clean forage.
- The jockey wheel in the middle guides the rotor in undulating fields.

Specifications:

MODEL NUMBER	WORKING WIDTH (M)	TRANSPORT WIDTH (M)	NUMBER OF ROTORS	WEIGHT (KG)	MIN HP REQUIREMENT
38	3.8	1.9	1	565	31
42	4.2	2.26	1	640	50



Hay Rakes



Krone Trailed Twin-Rotor Rake

The flexible twin-rotor TC centre delivery rakes stand out for producing exceptionally consistent windrows while working at extremely high rates, flexible work widths and maximum ha/h performance. The range lines up four models and work widths – 5.70 m to 9.30 m.

Features:

- Maintenance-free rotors and rotor gearboxes.
- Hard-wearing DuraMax cam tracks with three-year warranty.
- Flexible work widths, extra high lift-out.
- Variable running gear with adjustable track widths and large tyres.
- High ground clearance and high rotor lift-out for easy headland turns.

Specifications:

MODEL NUMBER	WORKING WIDTH (M)	TRANSPORT WIDTH (M)	NUMBER OF ROTORS	WEIGHT (KG)	MIN HP REQUIREMENT
TC 640	5.7-6.4	2.54	2	1400	35
TC 760	6.8-7.6	2.72	2	1950	50
TC 880	7.6-8.8	2.86	2	2300	55
TC930	8.1-9.3	2.86	2	2780	70





Krone Trailed Quad-Rotor Rake

Swadro 1400 and 1400 Plus from KRONE have four rotors that work at variable widths between 11.00m to 13.50m and easily achieve work rates of up to 13ha (32 acres) per hour. These machines stand out for high capacity, quick changeovers, rapid travel, great longevity and easy use.

Features:

- Maintenance-free rotors and rotor gearboxes.
- Hard-wearing DuraMax cam tracks with three-year warranty.
- Variable, up to 13.50 m (44'4") work widths.
- Convenient handling from a choice of KRONE operator terminals or an existing in-cab ISOBUS terminal.
- Folding tines (Swadro 1400) or a hydraulically lowering running gear (Swadro 1400 Plus) reduce the transport height to less than 4 m (13'2").

Specifications:

MODEL NUMBER	WORKING WIDTH (M)	TRANSPORT WIDTH (M)	NUMBER OF ROTORS	WEIGHT (KG)	MIN HP REQUIREMENT
1400	11-13.5	2.99	4	5,100	80
1400 Plus	11-13.5	2.99	4	5,700	80





Hay Mowers

Krone ActiveMow Rear Mount	26
Krone EasyCut Rear Mount	27
Krone EasyCut Front Mount	28
Krone M Series Front Mount	29
Krone EasyCut Combination	30
Krone EasyCut Trailed	31
Maxam M Range Mowers	32
Maxam MXL Mower	33



Hay Mowers



Krone ActiveMow Rear Mount

Heavy-duty and easy handling – the best mowing experience the world over. KRONE is well aware of the challenges their customers face. Therefore they have developed the ActiveMow disc mowers which increases comfort, profitability and versatility.

Features:

- Optimum ground pressure from responsive tension springs.
- Efficient drive-shaft based drive-line. No belts!
- Robust and fully welded cutter-bar without inner shoe.
- Quick-change blades. No tools required!
- SafeCut INSIDE – individual disc protection with shear-pin.

Specifications:

MODEL NUMBER	CUTTING WIDTH (M)	NUMBER OF DISCS/HATS	WEIGHT (KG)	MIN HP REQUIREMENT	AREA OUTPUT (HA/H)
AMR240	2.44	6	550	41	2-2.5
AMR280	2.83	7	605	55	2.5-3
AMR320	3.22	8	650	68	3-3.5
AMR360	3.61	9	740	75	3.5-4





Krone EasyCut Rear Mount

This innovative design features a new headstock with optional hydraulic control, the CV mower conditioner rotor with tines at steep angles, a compact design and easy handling for superior operator comfort.

Features:

- DuoGrip – double guidance and centre-of-gravity suspension.
- SafeCut INSIDE – individual disc protection with shear-pin.
- Quick-change blades. No tools required!
- Optimum ground pressure from responsive tension springs.
- SmartCut: Stripe-less cuts and optimal blade overlay.

Specifications:

MODEL NUMBER	CUTTING WIDTH (M)	NUMBER OF DISCS/HATS	WEIGHT (KG)	MIN HP REQUIREMENT	AREA OUTPUT (HA/H)
ECR280	2.73	6	780	55	3-3.5
ECR280CV	2.73	6	1120	70	3-3.5
ECR280CR	2.73	6	1140	70	3-3.5
ECR320	3.16	7	840	68	3.5-4
ECR320CV	3.16	7	1260	80	3.5-4
ECR320CR	3.16	7	1280	80	3.5-4
ECR360	3.6	8	1040	75	4-4.5
ECR400	4.04	9	1050	90	4.5-5



Hay Mowers



Krone EasyCut Front Mount

The front-mounted KRONE EasyCut F Series mowers stand out for easy handling, a straightforward design and superior functionality. Suspended by a pivoting headstock in its centre of gravity and close to the tractor's front wheels, the unit benefits from very little travel for perfect cuts, uncontaminated forage and fast re-growth.

Features:

- Powered top hats windrow the material for the tractor to straddle it.
- Compact in size and low in weight.
- Plenty up and down travel.
- Telescoping top link as an option.
- Intensive conditioning from aggressive steel tines or chevron-profiled rollers.

Specifications:

MODEL NUMBER	CUTTING WIDTH (M)	NUMBER OF DISCS/HATS	WEIGHT (KG)	MIN HP REQUIREMENT	AREA OUTPUT (HA/H)
ECF280	2.71	6	740	60	3-3.5
ECF320	3.14	7	860	70	3.5-4
ECF320CV	3.16	7	1080	80	3.5-4
ECF320CR	3.16	7	1100	80	3.5-4





Krone M Series Front Mount

Mountain farming is a particular challenge to man and machine. The front-mounted M Series disc mowers are the ideal machines to take on the challenge, boasting a compact design, a centre of gravity close to the tractor, perfect cuts on steep slopes and good attachment options to light-weight and very compact mountain tractors.

Features:

- Ideally suited for compact tractors and work in mountain regions.
- Low dead weight, little weight on the front axle.
- Compact build, excellent handling.
- Pivoting centre-of-gravity suspension system.
- Robust and pivoting headstock, just one pivot axis.

Specifications:

MODEL NUMBER	CUTTING WIDTH (M)	NUMBER OF DISCS/HATS	WEIGHT (KG)	MIN HP REQUIREMENT	AREA OUTPUT (HA/H)
ECF280M	2.73	6	500	55	3-3.5
ECF320M	3.16	7	620	65	3.5-4
ECF360M	3.6	8	680	75	4-4.5



Hay Mowers



Krone EasyCut Combination

KRONE mower combinations offer a large work width, an enormous efficiency and compact build, as well as a low tractor input, ease of operation and excellent handling.

Features:

- Combi Float: Uniform pressure across the full work width (Agritechnica Silver Medal).
- Telescoping mower arms.
- Balancing arm distributes the ground pressure uniformly to both ends.
- Robust, yet lightweight design with low transport height.

Specifications:

MODEL NUMBER	CUTTING WIDTH (M)	NUMBER OF DISCS/HATS	WEIGHT (KG)	MIN HP REQUIREMENT	AREA OUTPUT (HA/H)
ECB750	7.5	12	1380	100	7-10
ECB870CV	8.7	14	2690	150	9-11
ECB870CV Collect	8.7	14	3380	170	9-11
ECB890	8.6-8.9	14	1600	120	9-12
ECB970	9.4-9.7	16	1980	130	10-14
ECB1000CV	9.3-10.1	16	3,400	180	10-14
ECB1000CV Collect	9.3-10.1	16	3880	200	10-14





Krone EasyCut Trailed

The Krone trailed mowers stand out for an extremely low power input, maximum stability, superior levels of specification and operator comfort. Compared with mounted mowers, trailed machines reduce the load on the tractor's rear axle and its hydraulics.

Features:

- The DuoGrip system: Centre-of-gravity suspension and linkage control gives uniform ground pressure across the entire work width.
- Variable ground pressure: Adjustable coil springs provide quick and optimum adaptation to all conditions.
- Pivoting gearbox: The main drive-shaft doesn't angle when travelling through bends for an extended service life.
- Mid-mounted draw-bar allows cutting both sides.

Specifications:

MODEL NUMBER	CUTTING WIDTH (M)	NUMBER OF DISCS/HATS	MIN HP REQUIREMENT	AREA OUTPUT (HA/H)
EC3201CV	3.1	7	80	3.5-4
EC3200CRi	3.1	7	80	3.5-4
EC3210CV	3.2	7	80	3.5-4
EC3210CRi	3.2	7	80	3.5-4
EC6210CV	6.2	14	18	7-8



Hay Mowers



Maxam Rear Mount

Maxam mowers and toppers are multi-purpose mowers designed to do all the mowing and topping on your farm. A Maxam has the mowing capabilities of a disc mower, the convenience of a topper, and the spreading capabilities of a tedder.

Features:

- Perfect balance: Can be used on smaller tractors as they mount close to the tractor and the weight is evenly distributed.
- Patented 'spring float': Spring loaded top link system helps to follow all ground contours closely. System also transfers weight off the front of the mower so it glides easily over obstacles.
- Safe and practical: A PVC skirt is fitted to the front of the 3300IV to contain all debris, which adds to the overall safety of the machine.
- Optional Topping skids available which clip on and off easily.
- Optional Wilter Kit: The crop is cut, conditioned, and spread in one pass.

Specifications:

MODEL NUMBER	CUTTING WIDTH (M)	NUMBER OF DISCS/HATS	WEIGHT (KG)	MIN HP REQUIREMENT
M2500	2.5	2	550	70
M3300	3.3	4	720	80





Maxam Rear Side Mount

The MXL250 is effectively the Maxam 2500 mounted out the side of the tractor in the traditional mounting position. This equates to a very robust yet versatile mower in a very compact transport position. Ideal for farmers who cut their own crops and want the full spread of grass from the Wiltor spreader.

Features:

- The spring loaded breakaway system absorbs impact in a crash.
- The spring loaded weight transfer system ensures the MXL250 rides lightly on the ground and follows all ground contours closely.
- No outside skids to block on the crop so no time is lost when mowing.
- Optional Topping skids available which clip on and off easily.
- Optional Wiltor Kit: The crop is cut, conditioned, and spread in one pass.

Specifications:

MODEL NUMBER	CUTTING WIDTH (M)	NUMBER OF DISCS/HATS	WEIGHT (KG)	MIN HP REQUIREMENT
MXL250	2.5	2	750	70





Mulching Mowers

Berti General Purpose	35
Berti Vineyard/Orchard	36
Berti Heavy Duty Vineyard/ Orchard	37
Berti Pasture/Scrub	38
Berti Scrub/Gorse	39
Berti Gorse/Broom	40
Berti Forrestry	41



Berti General Purpose

Multi-purpose medium duty mulcher for tractors up to 110 hp. Ideal for roadside contractors and general purpose mulching and mowing.

Features:

- Double skin chassis with heavy duty hammer flails.
- Fully enclosed rotor bearings.
- Automatic belt adjuster.
- Integrated over-run clutch.
- Self-cleaning and height adjustable 194mm diameter rear roller.

Specifications:

MODEL NUMBER	WORKING WIDTH (M)	NUMBER OF HAMMERS/FLAILS	WEIGHT (KG)	HP REQUIREMENT
TBM180	1.8	16	700	50-110
TBM200	2	18	745	50-110



Mulching Mowers



Berti Vineyard/Orchard

Vineyard / Orchard Mulcher for tractors from 40 to 110 hp, ideal for prunings up to 80mm in diameter. New Zealand's most popular vineyard and orchard mulcher.

Features:

- Double skin chassis with Hammer flails.
- Enclosed bearings for maximum protection from foreign objects and moisture.
- Height adjustable 159mm diameter rear roller with scraper.
- Integrated over-run clutch with automatic belt adjuster.
- Mulcher can be offset to allow operator to mulch outside tractor width.

Specifications:

MODEL NUMBER	WORKING WIDTH (M)	NUMBER OF HAMMERS/FLAILS	WEIGHT (KG)	HP REQUIREMENT
TFB-Y140	1.4	12	590	50-110
TFB-Y160	1.6	14	670	50-110
TFB-Y180	1.8	16	730	50-110
TFB-Y200	2	18	760	50-110





Berti Heavy Duty Vineyard/Orchard

Heavy duty vineyard/orchard mulcher for tractors from 70 to 150 hp. Heavy duty mega flail for mulching prunings up to 100mm in diameter. Robust construction for the most demanding horticultural conditions.

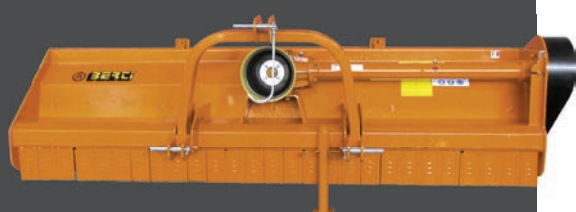
Features:

- Heavy duty mega 159mm diameter rotor with 2.4Kg Hammer Flails.
- Enclosed bearings for maximum protection from foreign objects and moisture.
- Height adjustable 194mm diameter rear roller with scraper.
- Integrated over-run clutch with automatic belt adjuster.
- Mulcher can be offset to allow operator to mulch outside tractor width.

Specifications:

MODEL NUMBER	WORKING WIDTH (M)	NUMBER OF HAMMERS/FLAILS	WEIGHT (KG)	HP REQUIREMENT
TFB-M160	1.6	14	670	50-110
TFB-M180	1.8	16	730	50-110
TFB-M200	2	18	760	50-110

Mulching Mowers



Berti Pasture/Scrub

Special build New Zealand spec general purpose pasture and scrub mulcher for tractors up to 150 hp. Ideal for pasture topping, scrub, gorse and general purpose mulching.

Features:

- High clearance mulcher for high output and fitted with 10m 'Y' flails or optional 'T' hammers.
- Enclosed bearings for maximum protection from foreign objects and moisture.
- Height adjustable, wide side skids.
- Integrated over-run clutch with automatic belt adjuster.

Specifications:

MODEL NUMBER	WORKING WIDTH (M)	NUMBER OF HAMMERS/FLAILS	WEIGHT (KG)	HP REQUIREMENT
TSB180	1.8	44	730	50-80
TSB200	2	48	790	50-90
TSB220	2.2	52	850	50-100
TSB250	2.5	60	1010	60-140
TSB285	2.85	68	1130	70-150
TSB300	3	72	1170	70-150





Berti Scrub/Gorse

Heavy duty scrub mulcher for tractors up to 150 hp, or 180 hp on the double drive model. Ideal for mulching grass, gorse and scrub up to 150mm diameter.

Features:

- Lateral transmission with drive-shaft.
- Large 203mm diameter roller with 2.4Kg hammer flails.
- Self-cleaning and height adjustable 194mm diameter rear roller.
- Integrated over-run clutch with automatic belt adjuster.

Specifications:

MODEL NUMBER	WORKING WIDTH (M)	NUMBER OF HAMMERS/FLAILS	WEIGHT (KG)	HP REQUIREMENT
TBM-Super 180	1.8	16	730	70-150
TBM-Super 200	1.6	14	670	75-150
TBM-Super 220	1.8	16	730	80-150
TBM-Super 250	2	18	760	90-150

Mulching Mowers



Berti Gorse/Broom

Heavy duty double drive scrub mulcher for tractors up to 200 hp. Ideal for scrub and general purpose mulching on high hp tractors.

Features:

- Double drive with automatic belt adjusters.
- Large 219mm diameter rotor with "Y" flails.
- Height adjustable side skids.
- Open back for high discharge.
- Integrated over-run clutch.

Specifications:

MODEL NUMBER	WORKING WIDTH (M)	NUMBER OF HAMMERS/FLAILS	WEIGHT (KG)	HP REQUIREMENT
King-DT270	2.7	64	1350	140-200
King-DT320	3.2	80	1610	140-200



Mulching Mowers



HAY & GRASSLAND 2019



Berti Forestry

Super heavy duty, swinging hammer forestry mulcher for tractors up to 250 hp. Ideal for mulching scrub and trees up to 330mm diameter.

Features:

- Huge 520mm diameter rotor with 360 degree swinging hammer flails, double edged, flame hardened.
- Hydraulic opening tailgate with dual rams.
- Double row, self-aligning bearings.
- Half moon heavy duty height adjustable skids.
- Hardox bushes and Hardox rotor protection.

Specifications:

MODEL NUMBER	WORKING WIDTH (M)	NUMBER OF HAMMERS/FLAILS	WEIGHT (KG)	HP REQUIREMENT
ECF180	1.8	16	730	130-200
ECF200	1.6	14	670	130-200
ECF220	1.8	16	730	140-200
ECF-DT250DD	2	18	760	150-250



NC EQUIPMENT | www.ncequipment.co.nz

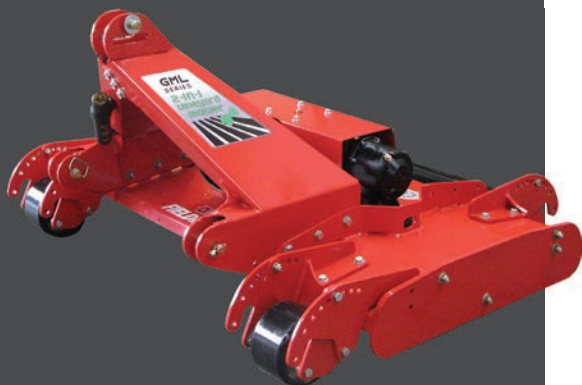


Topping Mowers

Fieldmaster GM Series	44
Fieldmaster Sabre Series	45
Fieldmaster M Series	46
Fieldmaster HD Series	47
Fieldmaster Jumbo	48
Fieldmaster TM Series	49
Fieldmaster GMT Series	50
Fieldmaster GMM Series	51



Topping Mowers



Fieldmaster GML Series

The GML series are a Multi-purpose Mulcher and Mower with an extensive model range and with side or rear discharge versions. The GML Series mowers meet most orchard/mowing requirements.

Features:

- Fitted with European gearbox, drive-line and cam clutch.
- Fitted with Rear Mega roller and twin front stubbie rollers.
- Triple stack mulcher blades are double edged and reversible and provide a finely chopped mulch material.
- Removable mulching vane and removable side-plates for side or rear discharge mowing options.

Specifications:

MODEL NUMBER	CUTTING WIDTH (MM)	OVERALL WIDTH (MM)	CUTTING RANGE (MM)	WEIGHT (KG)	HP REQUIREMENTS
GML160	1580	1630	15-100	650	30-80
GML180	1780	1840	15-100	720	30-80
GML200	1980	2040	15-100	780	30-80
GML230	2280	2340	15-100	820	40-80
GML270	2680	2765	15-100	850	50-90
GML300	2980	3065	15-100	920	70-130

FIELDMASTER

Topping Mowers



HAY & GRASSLAND 2019



Fieldmaster Sabre Series

Sabre rotary slashers suit 18-40hp compact tractors (Cat. I). Complete with adjustable skids, linkage that can be offset, floating top link, tough 5mm deck and PTO drive-shaft.

Features:

- 5mm G250 folded steel plate decks with integral double panels in stress zone.
- Swing back flails New Zealand made silicon manganese spring steel, tempered to the ideal hardness range for long life.
- 3-stage corrosion treatment and coating process of garnet blasting, zinc-based primer and thermosetting polyester topcoat, oven baked.
- Obstruction-free body lines that ensure minimal grass build up and effective discharge of cut material.

Specifications:

MODEL NUMBER	CUTTING WIDTH (MM)	CUTTING RANGE (MM)	HP REQUIREMENT	WEIGHT (KG)
Sabre 1200	1050	10-85	18-40	150
Sabre 1500	1380	10-85	18-40	210

FIELDMASTER

NC EQUIPMENT | www.ncequipment.co.nz

Topping Mowers



Fieldmaster M Series

M-Series medium weight Rotary slasher/topper/mowers suit 35-80hp tractors (Cat. I and II). Complete with linkage that can be offset, adjustable skids, floating top link, tough 6mm deck and PTO drive-shaft.

Features:

- 6mm G250 folded steel plate decks with integral double panels in stress zone.
- Swing back flails New Zealand made silicon manganese spring steel, tempered to the ideal hardness range for long life.
- 3-stage corrosion treatment and coating process of garnet blasting, zinc-based primer and thermosetting polyester topcoat, oven baked.
- Obstruction-free body lines that ensure minimal grass build up and effective discharge of cut material.

Specifications:

MODEL NUMBER	CUTTING WIDTH (MM)	CUTTING RANGE (MM)	HP REQUIREMENT	WEIGHT (KG)
M-SIXTY	1488	10-85	35-80	350
M-SEVENTY	1720	10-85	35-80	480

FIELDMASTER

Topping Mowers



HAY & GRASSLAND 2019



Fieldmaster HD Series

Fieldmaster Heavy Duty Series Slashers suit 60-100hp (Cat. II) tractors, adjustable skids and floating top link, guards and PTO drive-shaft.

Features:

- Heavy duty laminated twin 6mm deck and monocoque chassis construction.
- Front and rear chain curtain.
- For cutting up to 50mm (2") Scrub.
- Standard with Scrub/axe flails and optional 4 blade mulch upgrade available.

Specifications:

MODEL NUMBER	CUTTING WIDTH (MM)	CUTTING RANGE (MM)	HP REQUIREMENT	WEIGHT (KG)
HD-SIXTY	1.5	20-120	60-100	550
HD-SEVENTY	1.8	20-120	60-100	650

FIELDMASTER

NC EQUIPMENT | www.ncequipment.co.nz

Topping Mowers



Fieldmaster Jumbo

3 point linkage hi-clearance slasher/ brush cutter for cutting up to 150mm (6") scrub. Suits tractors 80-250hp (Cat. II) comes c/w H.D. Circular 16mm flail plate, 4 x 16mm H.D. Axe flails.

Features:

- 10mm plate deck for cutting scrub up to 150mm (6").
- Super Ag Series Agricultural gearboxes with up-sized (1-3/4") 20 spline input shaft.
- NZ made 100mm wide axe flail blades give you maximum impact and cutting power.
- 1000rpm gearbox and H.D. PTO drive-shaft.

Specifications:

MODEL NUMBER	CUTTING WIDTH (MM)	CUTTING RANGE (MM)	HP REQUIREMENT	WEIGHT (KG)
JUMBO	1.8	30-120	80-250	850

FIELDMASTER

Topping Mowers



Fieldmaster TM Series

A high-clearance, hi-speed, twin-belt driven pasture topper.

Features:

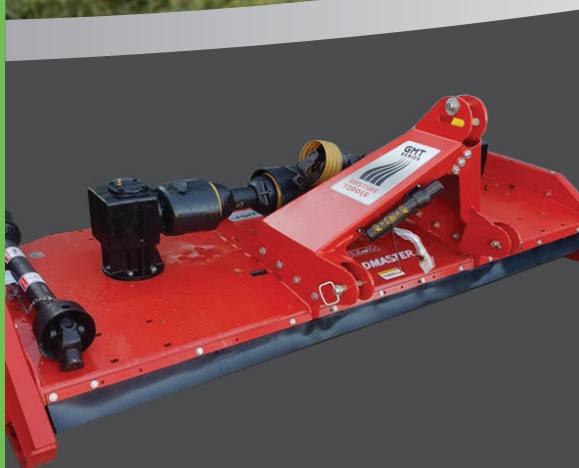
- Fitted with "Gold-Tip" Blades for clean cutting.
- High-clearance adjustable topping skids
- Open/wide grass flow vanes for lush pasture.
- Front rubber safety skirt.
- Floating top link for contour following.

Specifications:

MODEL NUMBER	CUTTING WIDTH (MM)	CUTTING RANGE (MM)	HP REQUIREMENT	WEIGHT (KG)
TM240	2345	20-120	40-120	680
TM270	2645	20-120	40-120	720
TM300	2945	20-120	40-120	780

FIELDMASTER

Topping Mowers



Fieldmaster GMT Series

A rugged All Gear Drive pasture topper.

Features:

- Fitted with "Gold-Tip" Blades for clean cutting.
- High-clearance adjustable topping skids.
- A front PVC safety skirt.
- Floating top link for contour following.

Specifications:

MODEL NUMBER	CUTTING WIDTH (MM)	CUTTING RANGE (MM)	HP REQUIREMENT	WEIGHT (KG)
GMT200	1980	20-120	30-80	700
GMT230	2280	20-120	40-80	750
GMT270	2680	20-120	50-90	780
GMT300	2980	20-120	70-130	820

FIELDMASTER



Fieldmaster GMM Series

The GMM is a multi-purpose machine that can be easily changed over to be used as a H.D. pasture topper or a slasher by simply changing the blades. The GMM series is great for mulching grain, maize silage stubble, bull rushes, kikuyu, gorse, bracken and overgrowth.

Features:

- European gearboxes, drive-line and cam clutch integrated PTO (1300Nm).
- Lower power requirement means less diesel consumption.
- The transmission system delivers full PTO power to the blades which means less slippage.
- Fitted standard with triple stack mulching blades and front safety chains.
- Removable rear mulch retaining panels.

Specifications:

MODEL NUMBER	CUTTING WIDTH (MM)	CUTTING RANGE (MM)	HP REQUIREMENT	WEIGHT (KG)
GMM180	1780	20-120	30-80	690
GMM200	1980	20-120	30-80	740
GMM230	2280	20-120	40-80	790
GMM270	2680	20-120	50-90	820
GMM300	2980	20-120	70-130	880

FIELDMASTER



Finishing Mowers

Fieldmaster PM Series

53



Fieldmaster PM Series

Heavy Duty Twin Belt Drive 5000 Series Rotary Mowers come standard with a rear roller or optional twin rollers. Twin belt drive ensures maximum power to the “Gold Tip” fine cutting flails.

Features:

- Twin, Deep groove section belts to ensure maximum power delivery to blades in all conditions, plus extended belt life.
- A triangulated 5mm deck for strength where needed, without adding weight.
- Rear rubber safety skirt.
- 67% speed-increaser pulley ratio.

Specifications:

MODEL NUMBER	CUTTING WIDTH (MM)	CUTTING RANGE (MM)	HP REQUIREMENT	WEIGHT (KG)
PM 210	2035	10-110	35-80	550
PM 240	2345	10-110	35-80	650
PM 270	2710	10-110	40-90	710
PM 300	2982	10-110	40-90	695

FIELDMASTER



Loader Wagons

Krone Forage and Discharge
Wagons

55



Krone Forage/Discharge Wagons

Krone's Self-loading and forager-filled forage wagons run in both the grass harvest chain as self-loading machines with discharge rollers and in the maize transport chain as forager-filled silage trailers.

Features:

- EasyFlow pick-up with no cam and no chains.
- Cut-and-feed unit is segmental switchable with central adjustment and individual knife protection.
- Lower floor conveyor, thus shortened feed channel ensures fuel-saving operation and special crop protection as well as optimum filling of the loading area.

Specifications:

MODEL NUMBER	CAPACITY (M3)	PICKUP WIDTH (MM)	GROSS WEIGHT (KG)	HP REQUIREMENT
AX 250 D	25	1800	16,000	80
AX 280 L	28	1800	16,000	90
AX 310 L	31	1800	16,000	100
MX 330 GL	33	1800	18,000	120
MX 370 GL	37	1800	18,000	140
RX 400 GL	40	2015	24,000	150
RX 430 GL	43	2015	24,000	170
ZX 430 GL	43	2125	24,000	210
ZX 470 GL	47	2125	31,000	210
ZX 560 GL	56	2125	34,000	240





Our Range and Service

Our Values	57
Our Commitment	58
Equipment Catalogues	59



“

Our values are the qualities, customs, standards, principles and culture that the company believes will help it and its employees succeed. They are the basis for what we do and how we do it. Taken together, they identify NC Equipment's overarching value of TRUST.

✓ **Assured Quality**

We are committed to the pursuit of Excellence and realize that leading edge innovation defines our future. We will provide what is superior and distinctive, something that fills real needs, and provides lasting value. Continuous improvement is a way of life and individuals are encouraged to challenge the 'status quo' sharing ideas, suggestions and best practices to improve the effectiveness and quality of our products, services and team.

✓ **Trusted Experience**

We are genuinely interested in our customer's needs, problems or complaints, and set aggressive goals in relation to responding, analysing and solving them. We will be truthful, honest, sincere and frank with our customers, colleagues, vendors and competitors and will not compromise our ethics or integrity in the name of profit. We will each be held accountable for what we say and do, competing for the shareholders based on the results we produce.

✓ **World Class Service**

We recognize that this is a competitive market and in order to 'WOW' our customers we are committed to continuously developing our knowledge, systems and service preforming above the standard for our industry. We are loyal and devoted to caring for each other, the environment and the property of our clients and company whilst upholding respect for authority, family values and heritage.

Our Commitment



“

Machinery is the livelihood for a lot of our customers and when things go wrong it's our support that counts.

Parts

We stock a huge range of spare parts and consumables for our large range of machinery and can also source parts for many other brands. Our knowledgeable and friendly parts team look forward to assisting you with any parts requirements in-store or by phone, and more often than not will have you up and running the same day!

Service

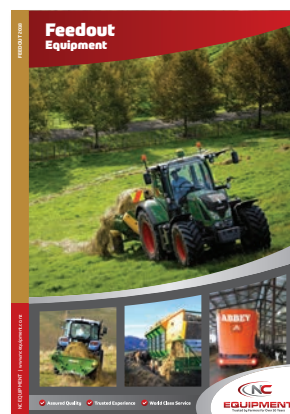
As a company we are committed to fulfilling the needs of our customers providing 'World Class' customer service and support from day one. Whatever the request, time of day or location, you can rely on our team of experienced and qualified service technicians to ensure your equipment is kept in action 24/7!

Equipment Catalogues

“

If you combine a passion for machinery, farming and innovation, you get a specialist focusing on nine key equipment categories for today's modern Farmer.

Ask about our other Equipment Catalogues.





HAY & GRASSLAND 2019

NC EQUIPMENT | www.ncequipment.co.nz

✓ Assured Quality ✓ Trusted Experience ✓ World Class Service

0800 908 908 | www.ncequipment.co.nz


EQUIPMENT
Trusted by Farmers for Over 50 Years